

**Alberta**

Freedom To Create. Spirit To Achieve.

# HIV Epidemiology in Alberta

## 1999-2008

**Kim Simmonds**

Alberta Health & Wellness

Public Health Division

June 25, 2009

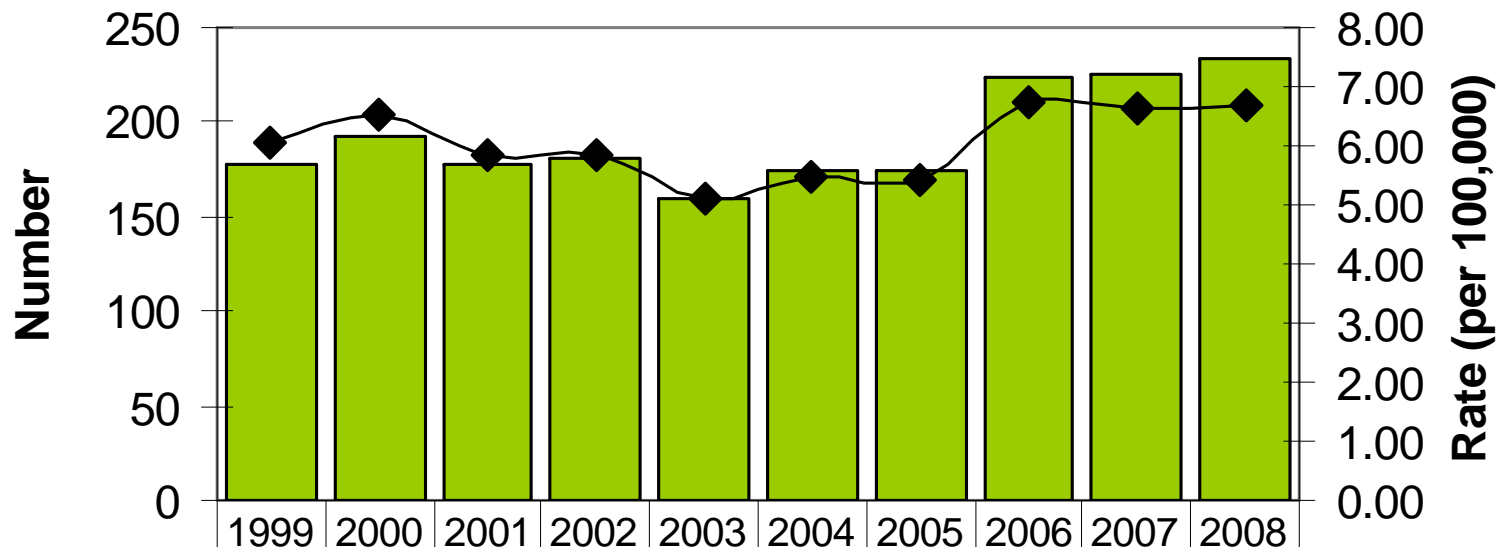
**Government  
of Alberta**



# Updates on...

- Cases & Rates
- Age & Gender Distribution
- Exposure
- Ethnicity
- IDU and MSM
- Aboriginal and Non-Aboriginal
- NPEP
- AIDS



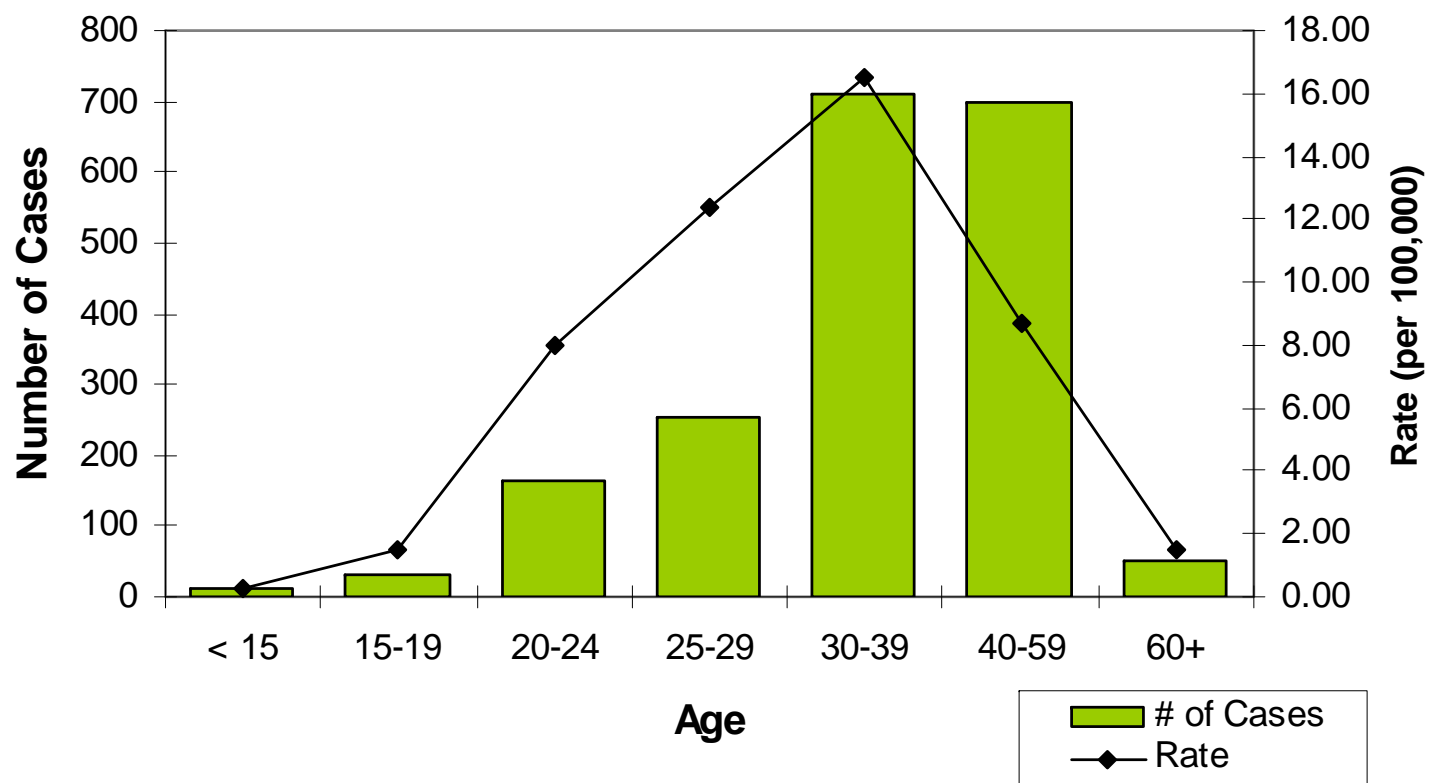
## Number and Crude Rate of Newly Reported HIV Cases in Alberta by Year of Diagnosis. 1999-2008 (n=1,920)



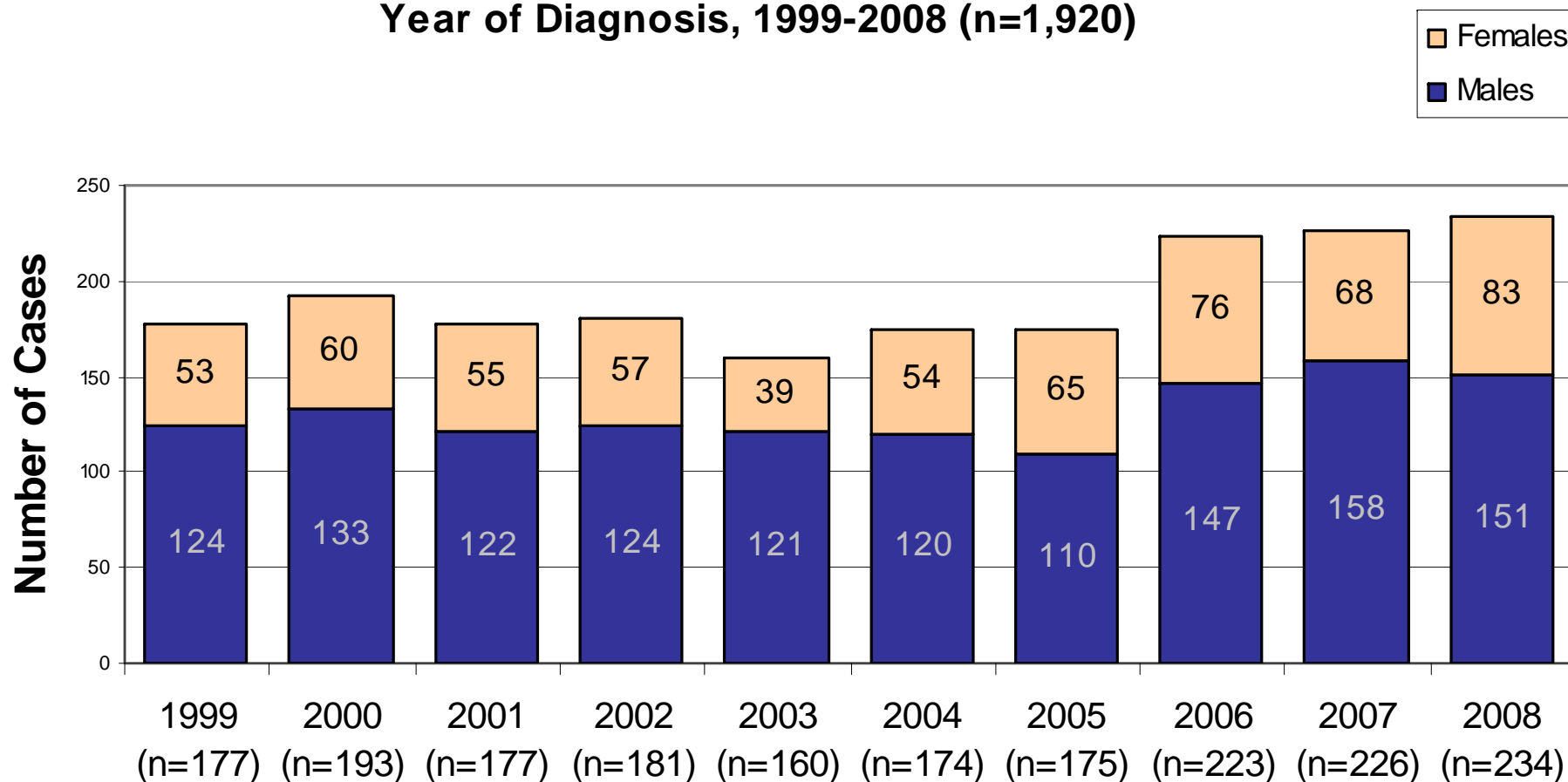
 Number of Cases	177	193	177	181	160	174	175	223	226	234
 Rate per 100,000	6.05	6.50	5.86	5.86	5.10	5.47	5.43	6.76	6.63	6.69



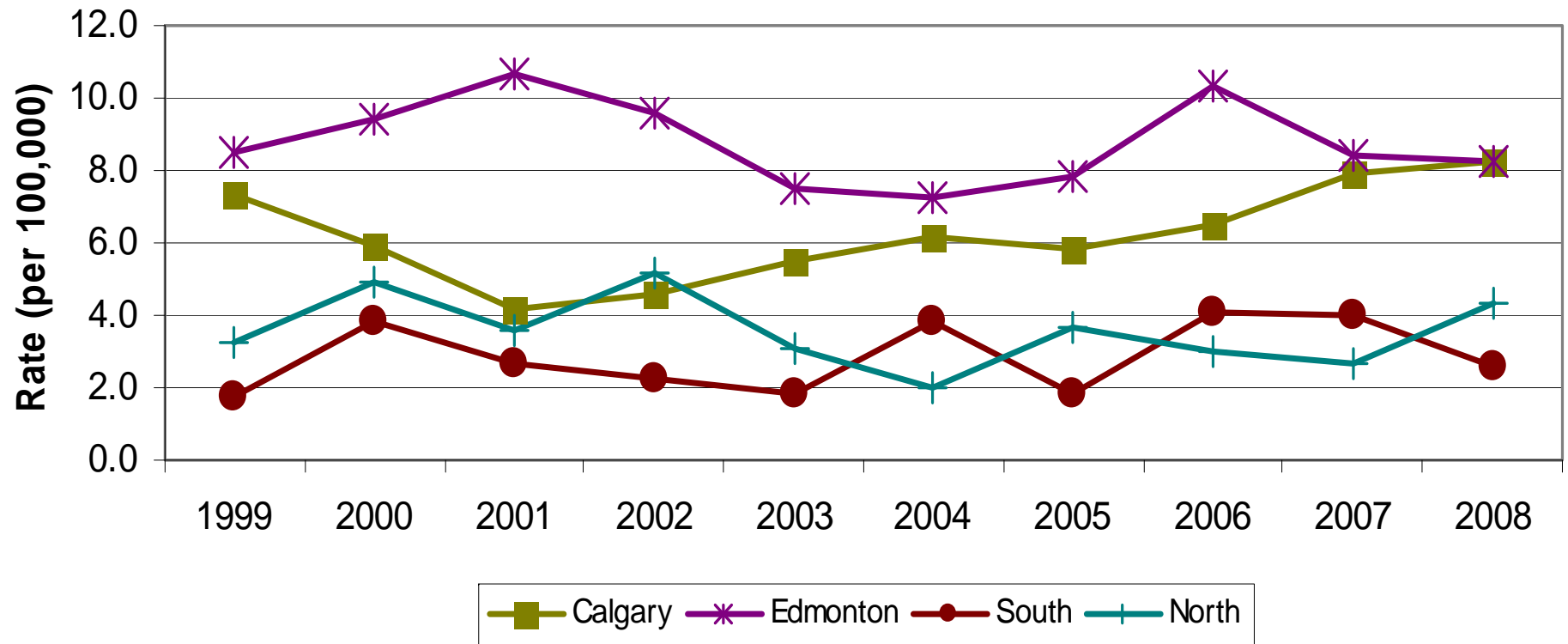
## Age-Specific Rate (per 100 000) and Counts of Newly Reported HIV Cases in Alberta 1999-2008 (n=1,920)



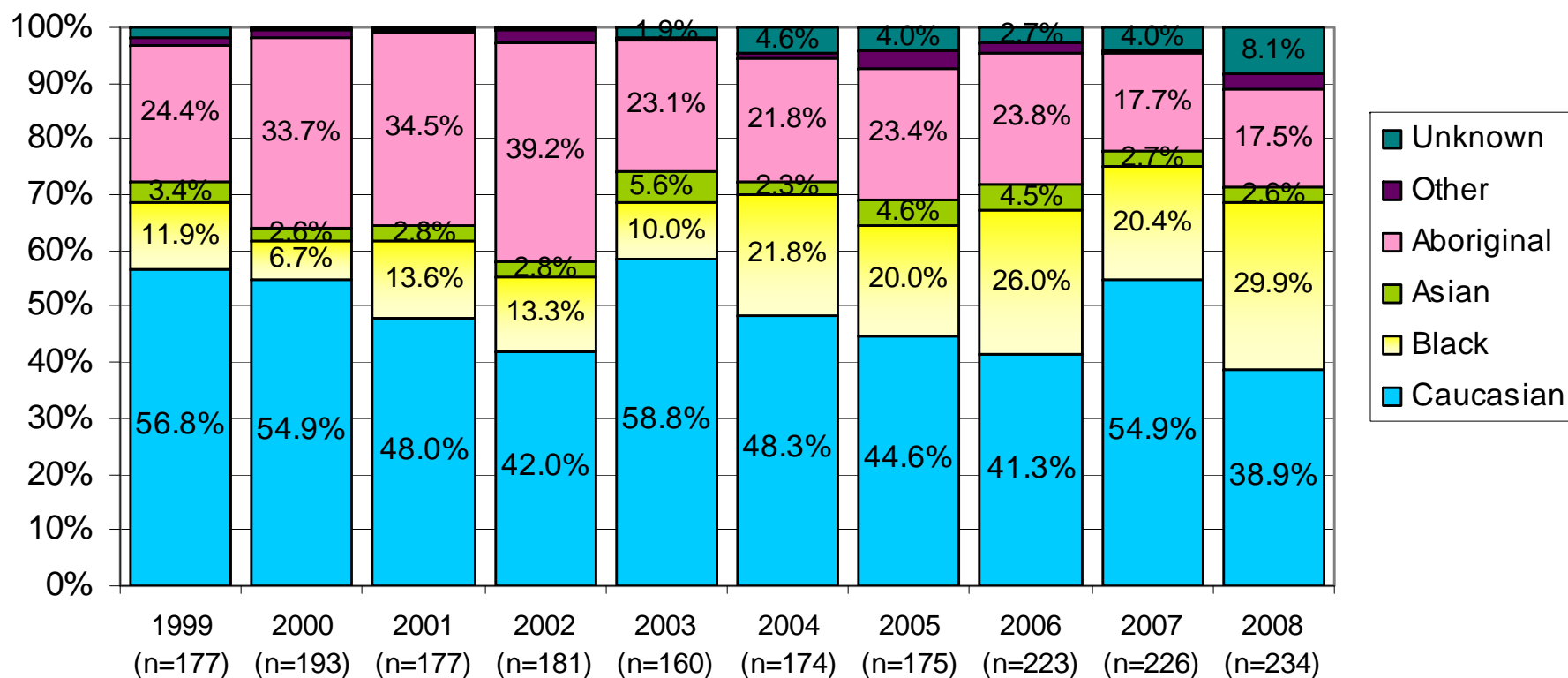
## Gender Distribution of Newly Reported HIV Cases in Alberta by Year of Diagnosis, 1999-2008 (n=1,920)



## Rate of newly Reported HIV Cases by Area and Year of Diagnosis, 1999-2008 (n=1,920)

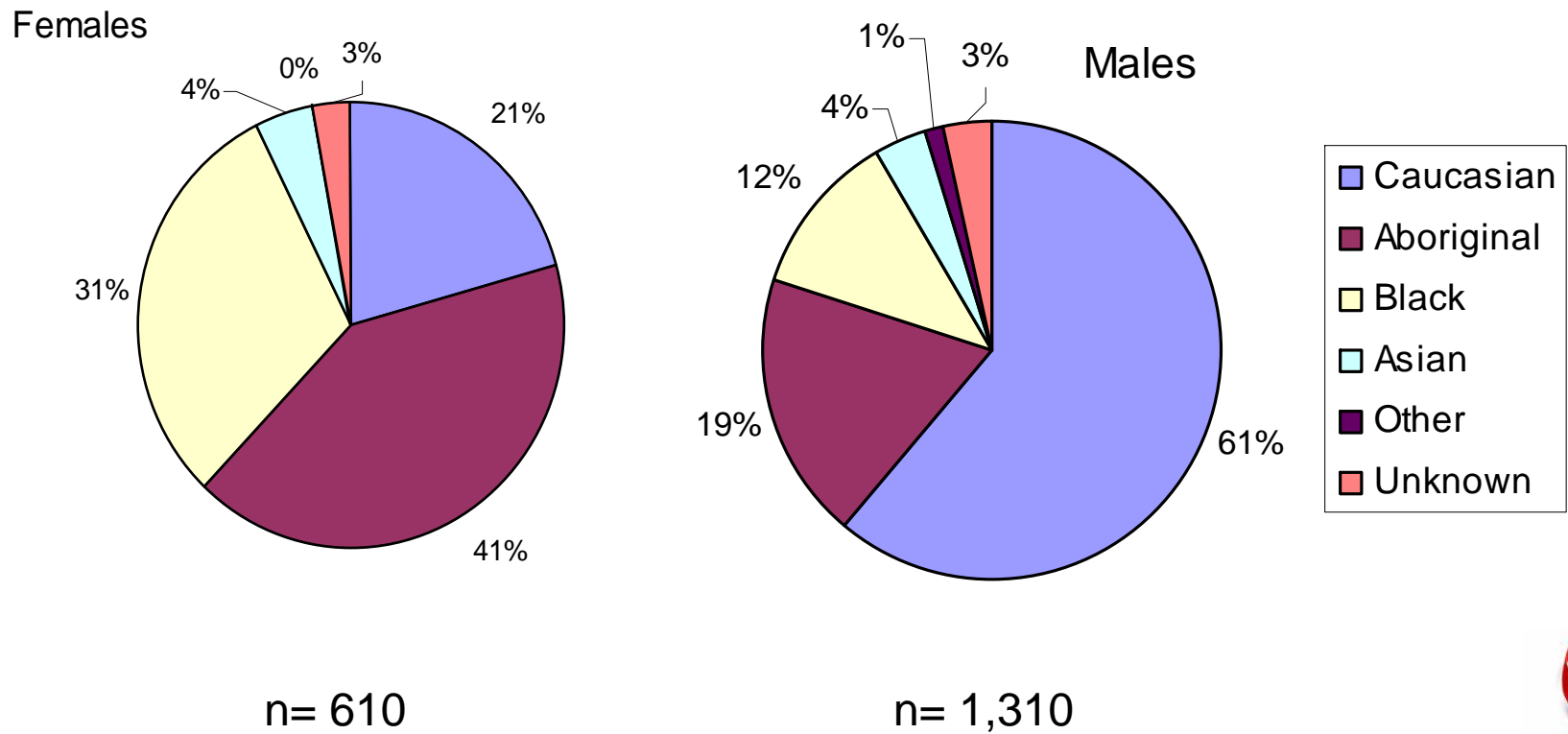


## Proportion of Newly Reported HIV Cases in Alberta by Ethnicity and Year of Diagnosis, 1999-2008

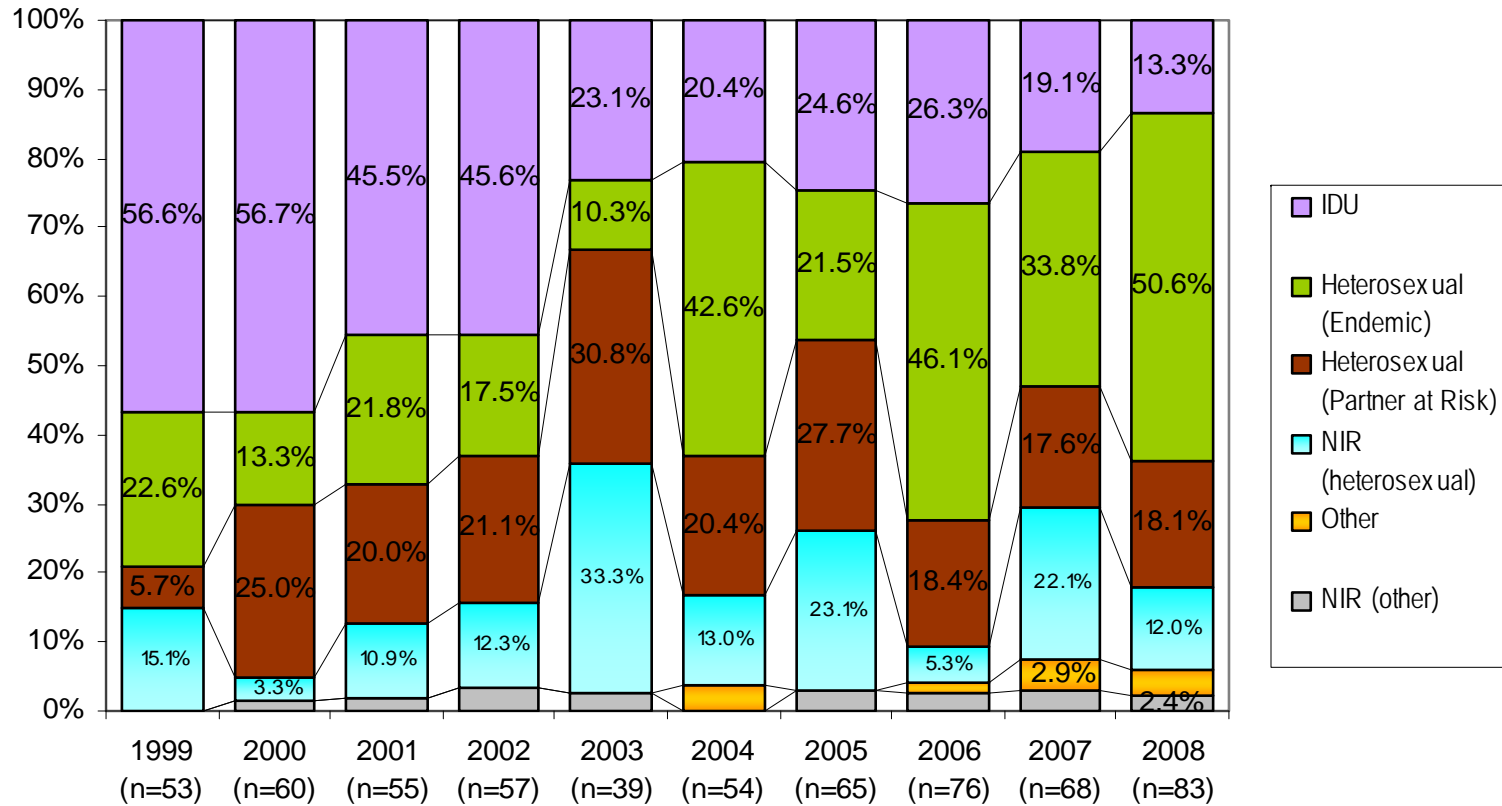


Aboriginal refers to: First Nations, Metis and Inuit. Asian refers to: South Asian, Asian and West Asian

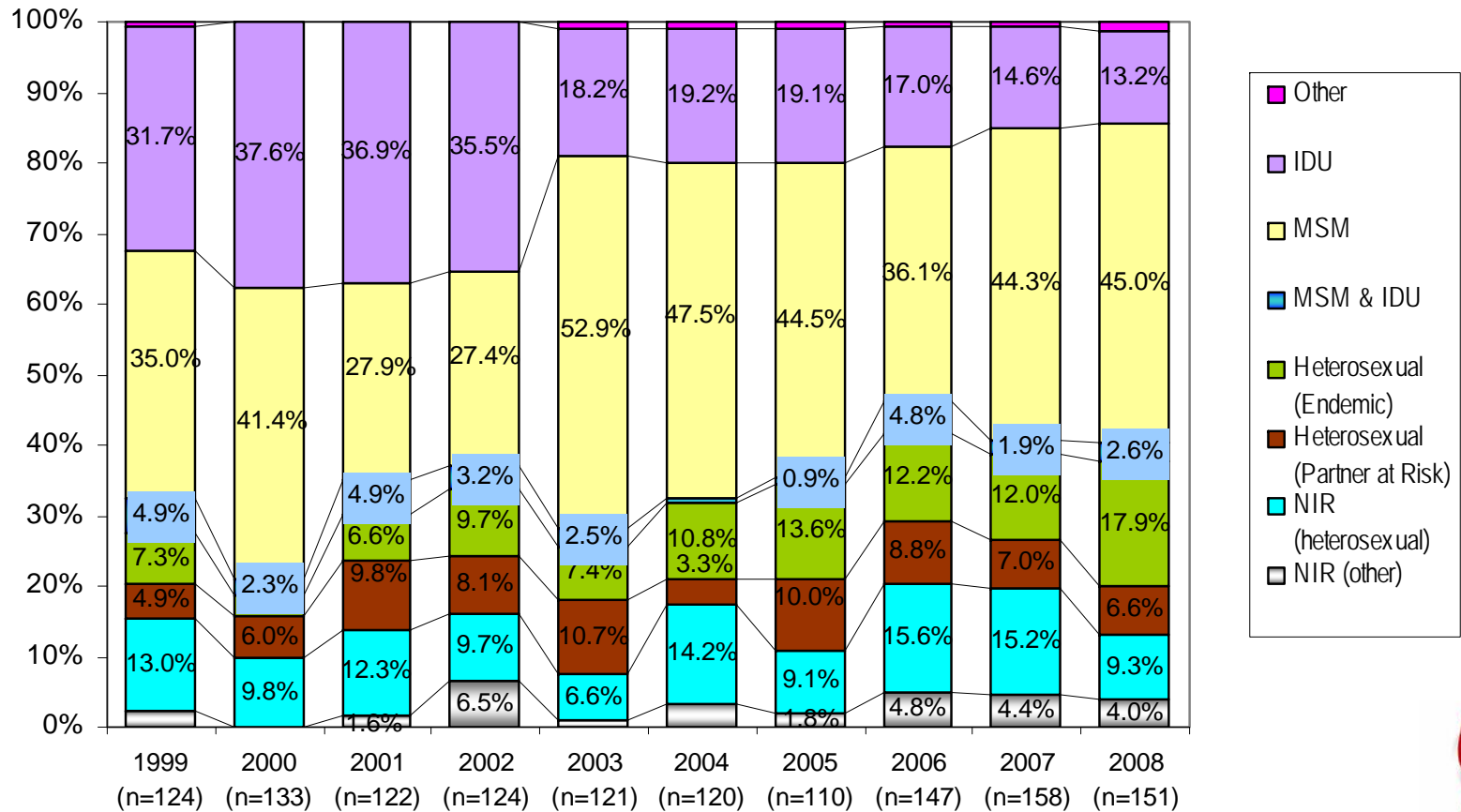
## Ethnicity of Newly Reported cases of HIV by Gender, cumulative 1999-2008



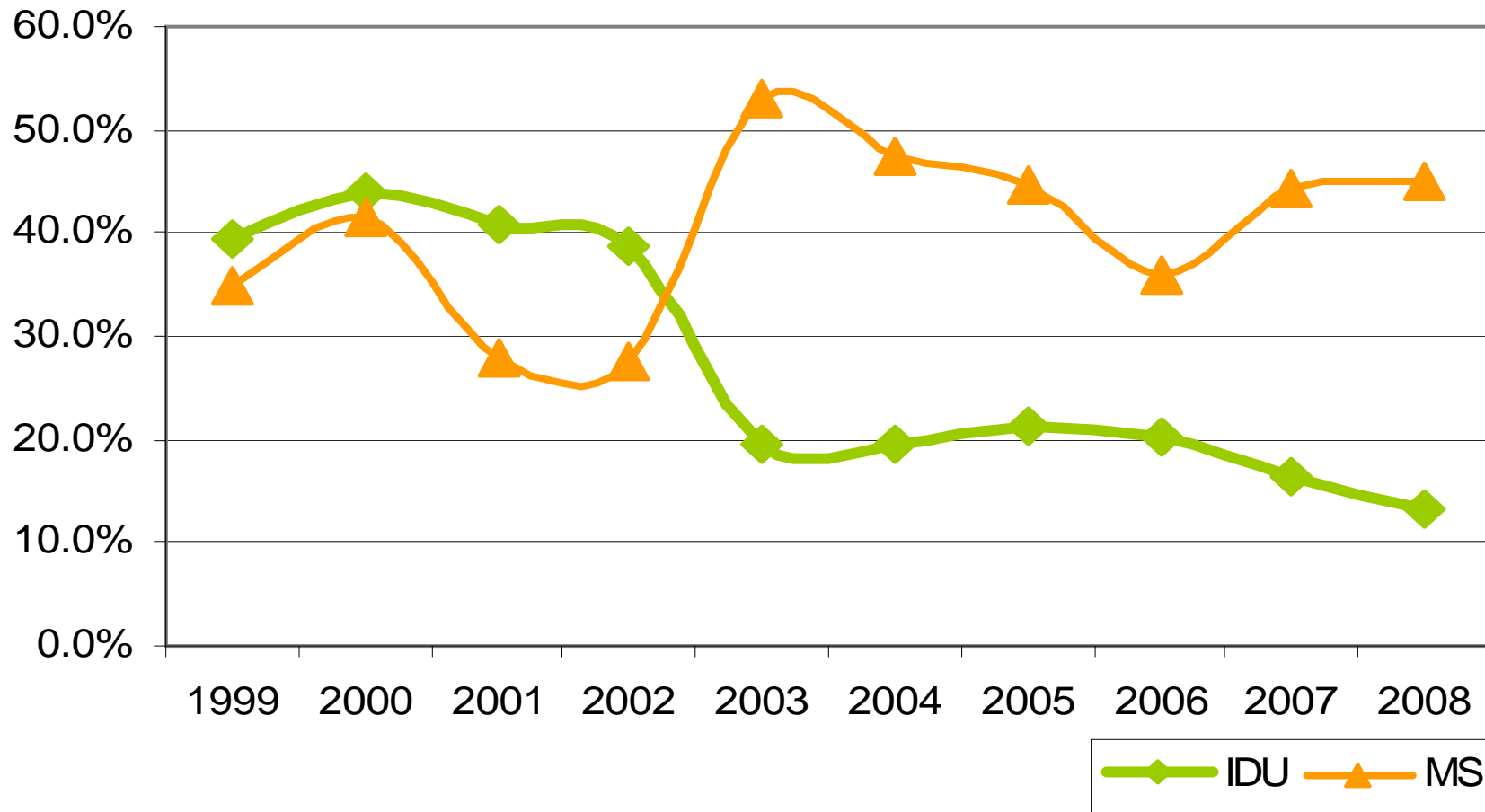
## Proportion of Newly Reported HIV Cases in Alberta by Exposure Category among Females by Year of Diagnosis 1999-2008



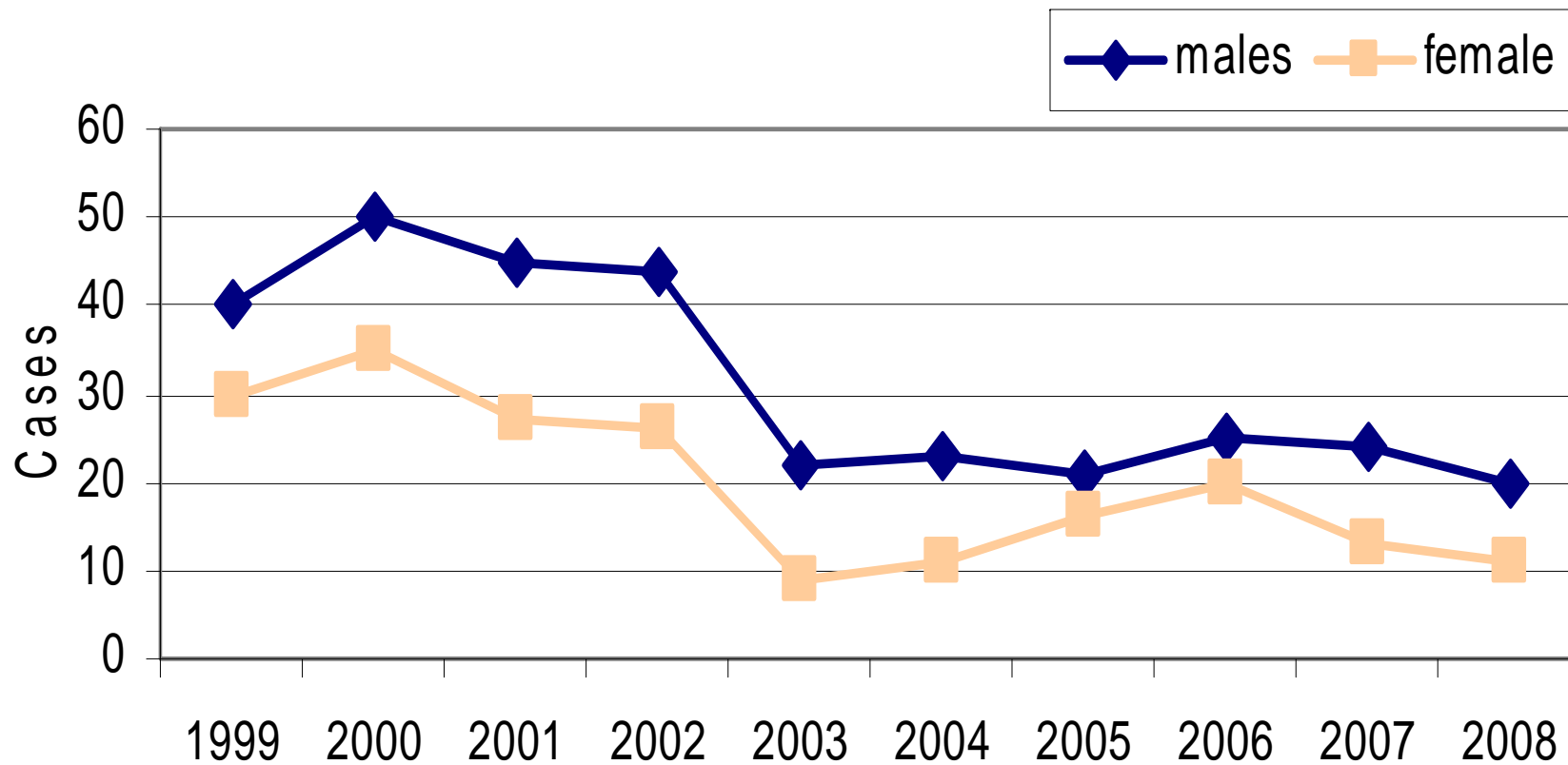
## Proportion of Newly Reported HIV Cases in Alberta by Exposure Category among Males by Year of Diagnosis 1999-2008



## Proportion of Newly Reported HIV cases with IDU as an Exposure, 1999-2008 (n=752)



## Number of Newly Reported HIV Cases related to IDU by Gender, 1999-2008 (n=512)



# Aboriginal & Non Aboriginal

- Infection Rate

- Aboriginal **40.7** cases per 100,000
- Non-Aboriginal **4.5** cases per 100,000

- Most Frequent Exposure

- Aboriginal Females: **IDU** (49.0%)
- Non-Aboriginal Females: **Heterosexual Endemic** (40.2%)
- Aboriginal Males: **IDU** (45.1%)
- Non-Aboriginal Males: **MSM** (42.1%)



# NPEP

## Non-Occupational Post Exposure prophylaxis

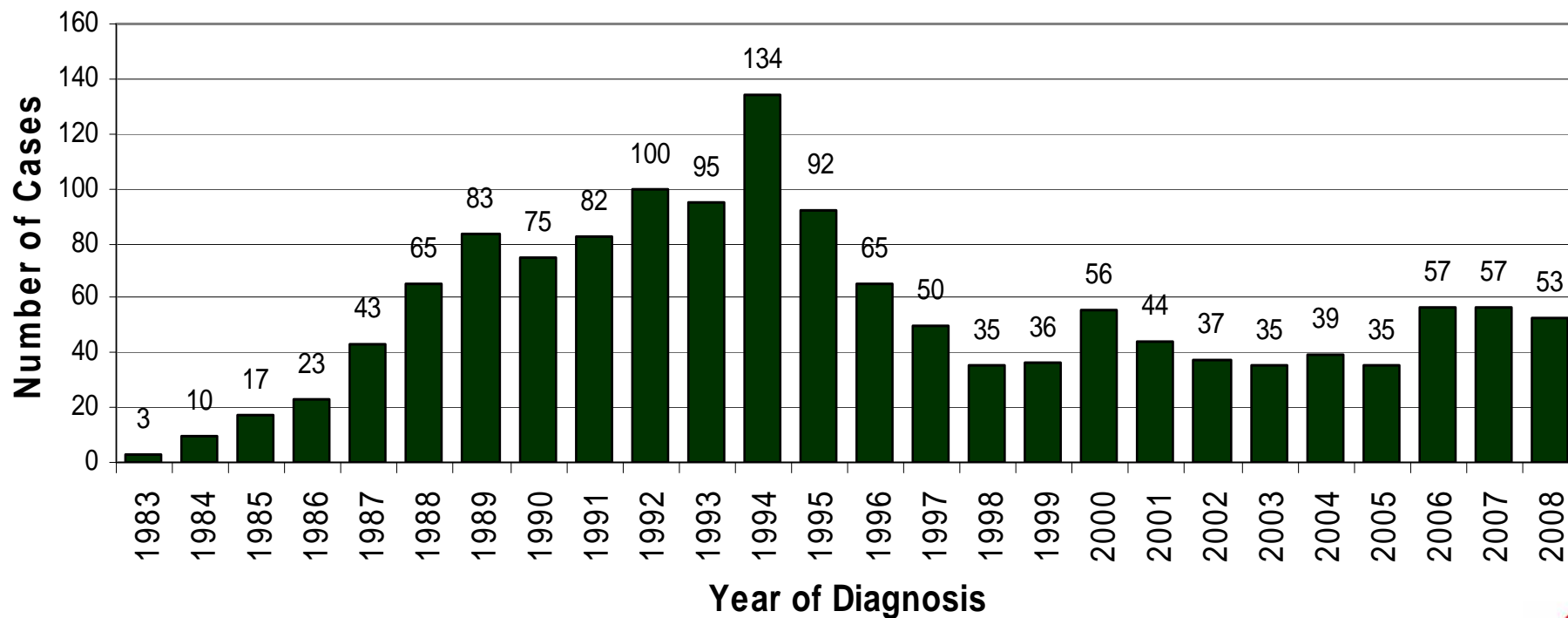
Year	Approved
2005	44
2006	71
2007	107
2008	91

Exposure	Cases
Sexual Assault	232 (74.6%)
Needle Stick	27
Consensual Sex	11
Assault	7
Percutaneous	10
Other	26

n=313



## Number of Newly Reported AIDS Cases in Alberta by Year of Diagnosis. 1983-2008 (n=1,421)



# Questions or Comments?



Thank you for your time

